



LIBROPLANTA Publisher

Installation Guide

LPPUBLISH-LIBRO-IG001-00

Issue No. 001, 2014-09-01



Copyright © 2014 LIBROPLANTA LLC
S1000D® is a registered trademark of ASD

Publisher:



LIBROPLANTA LLC



Applicable to:
All

End of data module

UNCLASSIFIED

LPPUBLISH-A-00-00-00-00A-001C-A

2014-09-01 Page 1



Table of Contents

Document title	Data module code	Issue date Issue No.	No. of pages
Front matter			
LIBROPLANTA Publisher — Title page	LPPUBLISH-A-00-00-00-00A-001C-A	2014-09-01 001	1
Installation Guide			
LIBROPLANTA — Requirements	LP-A-00-00-00-00A-030A-A	2014-09-01 001	1
LIBROPLANTA Publisher — Installation Procedure	LPPUBLISH-A-00-00-00-00A-750A-A	2014-09-01 001	5
Orchard CMS S1000D Edition — Installation Procedure	LP-A-00-00-10-00A-750A-A	2014-09-01 001	5
SQL Server — Configuration	LP-A-00-00-10-00A-272A-A	2014-09-01 001	4



LIBROPLANTA

Requirements

Table of contents

	Page
Requirements.....	1
References.....	1
Description.....	1
1 Minimum system requirements.....	1
2 Supported OS.....	1

List of tables

1	References.....	1
---	-----------------	---

References

Table 1 References

Data module / Technical publication	Title
None	

Description

1 Minimum system requirements

- 1 GHz or faster 32-bit (x86) or 64-bit (x64) processor
- 1 GB RAM (32-bit) or 2 GB RAM (64-bit)
- 16 GB available hard disk space (32-bit) or 20 GB (64-bit)
- DirectX 9 graphics device with WDDM 1.0 or higher driver.

2 Supported OS

- Windows 7 Professional or higher (x86, x64)
- Windows 8 Professional or higher (x86, x64)
- Windows 8.1 Professional or higher (x86, x64)
- Windows Server 2008 (x86, x64)
- Windows Server 2008 R2 (x86, x64)
- Windows Server 2012 (x86, x64)
- Windows Server 2012 R2 (x86, x64)
- Linux Ubuntu



LIBROPLANTA Publisher

Installation Procedure

Table of contents

	Page
Installation Procedure.....	1
References.....	1
Preliminary requirements.....	1
Procedure.....	2
Requirements after job completion.....	5

List of tables

1	References.....	1
2	Required conditions.....	1
3	Support equipment.....	2
4	Consumables, materials and expendables.....	2
5	Spares.....	2
6	Required conditions.....	5

List of figures

1	Orchard CMS admin panel.....	3
2	Installed modules.....	3
3	LIBROPLANTA.Publisher feature.....	4
4	Main page.....	4
5	LIBROPLANTA category.....	5

References

Table 1 References

Data module / Technical publication	Title
None	

Preliminary requirements

Required conditions

Table 2 Required conditions

Action / Condition	Data module / Technical publication
Orchard CMS S1000D Edition must be installed prior to installing LIBROPLANTA Publisher	LP-A-00-00-10-00A-750A-A

Applicable to:
All

LPPUBLISH-A-00-00-00-00A-750A-A



Support equipment

Table 3 Support equipment

Name	Identification/Reference	Quantity	Remark
None			

Consumables, materials and expendables

Table 4 Consumables, materials and expendables

Name	Identification/Reference	Quantity	Remark
None			

Spares

Table 5 Spares

Name	Identification/Reference	Quantity	Remark
None			

Safety conditions

Note 1

Orchard CMS S1000D Edition must be installed prior to installing LIBROPLANTA Publisher

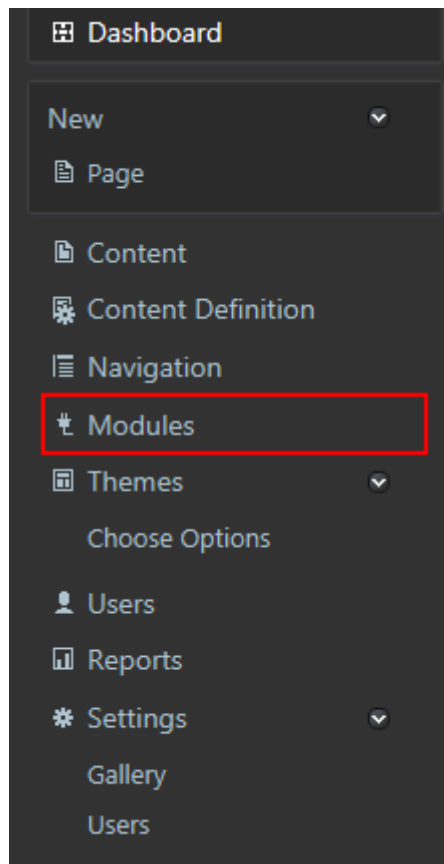
Procedure

- 1 Enter web address of Orchard CMS S1000D Edition.

Note 2

For example: <http://localhost:8080/admin>.

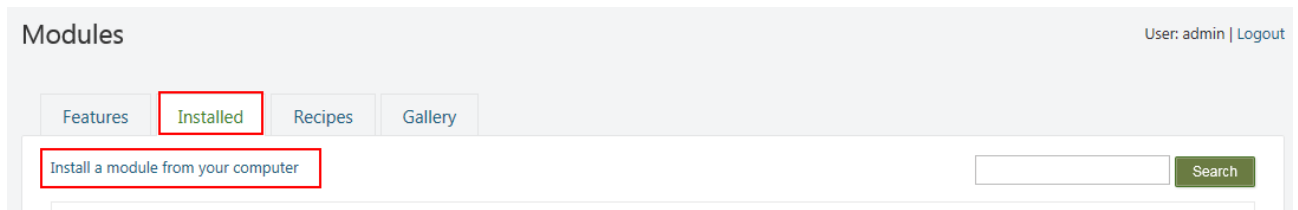
- 2 Click on *Modules* Tab ([Fig 1](#)).



ICN-LP-A-000000-A-LIBRO-00001-E-001-01

Fig 1 Orchard CMS admin panel

- 3 Select *Installed* Tab (Fig 2) and click on *Install a module from your computer*.



ICN-LP-A-000000-A-LIBRO-00002-E-001-01

Fig 2 Installed modules

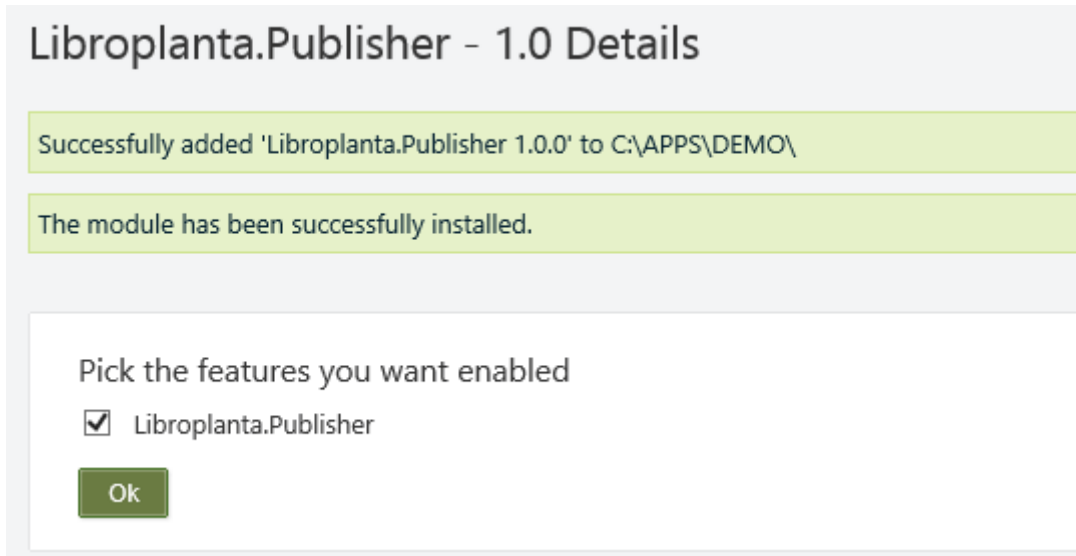
- 4 Install modules:
- 1 LIBROPLANTA.Publisher module (Step 5).

5 LIBROPLANTA.Publisher module installation

Note 3

Prior to installation make sure that the module is not installed.

- 5.1 Click on *Browse* and select *LIBROPLANTA.Publisher.X.X.X.nupkg* file.
- 5.2 Click *OK* (Fig 3).



ICN-LP-A-000000-A-LIBRO-00012-E-001-01

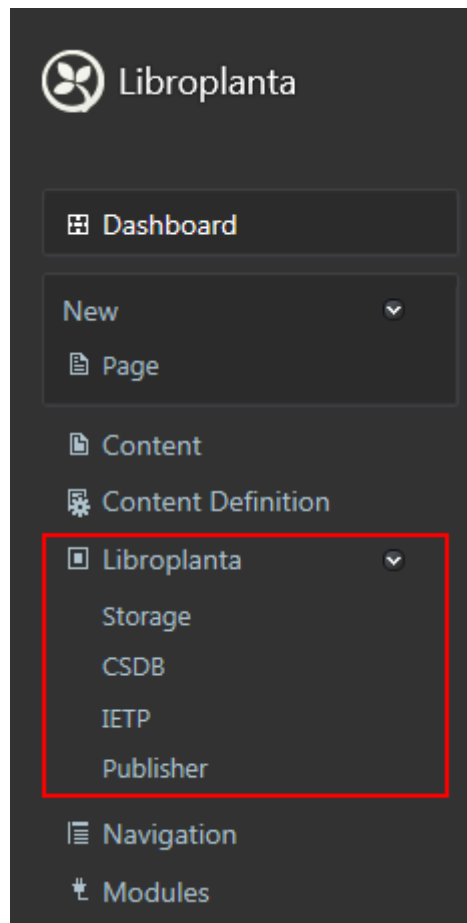
Fig 3 LIBROPLANTA.Publisher feature

6 Ensure that installed module are present (Fig 4, Fig 5).



ICN-LP-A-000000-A-LIBRO-00017-E-001-01

Fig 4 Main page



ICN-LP-A-000000-A-LIBRO-00018-E-001-01

Fig 5 LIBROPLANTA category

Requirements after job completion

Required conditions

Table 6 Required conditions

Action / Condition	Data module / Technical publication
None	



Orchard CMS S1000D Edition

Installation Procedure

Table of contents

	Page
Installation Procedure.....	1
References.....	1
Preliminary requirements.....	1
Procedure.....	2
Requirements after job completion.....	5

List of tables

1	References.....	1
2	Required conditions.....	1
3	Support equipment.....	2
4	Consumables, materials and expendables.....	2
5	Spares.....	2
6	Required conditions.....	5

List of figures

1	Setup file (EXE).....	2
2	Installer screen.....	3
3	Orchard Get Started Window.....	4
4	Sign In Window.....	5

References

Table 1 References

Data module / Technical publication	Title
None	

Preliminary requirements

Required conditions

Table 2 Required conditions

Action / Condition	Data module / Technical publication
None	



Support equipment

Table 3 Support equipment

Name	Identification/Reference	Quantity	Remark
None			

Consumables, materials and expendables

Table 4 Consumables, materials and expendables

Name	Identification/Reference	Quantity	Remark
None			

Spares

Table 5 Spares

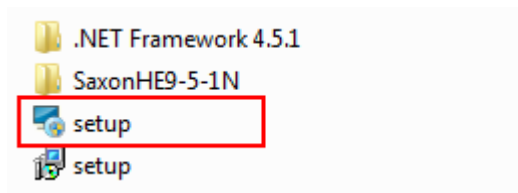
Name	Identification/Reference	Quantity	Remark
None			

Safety conditions

None

Procedure

- 1 Open folder with setup file and run *setup.exe* (Fig 1).



ICN-LP-A-000000-A-LIBRO-00008-E-001-01

Fig 1 Setup file (EXE)

- 2 Follow the Installer instructions (Fig 2).

Note 1

If necessary, the following components will be installed automatically:

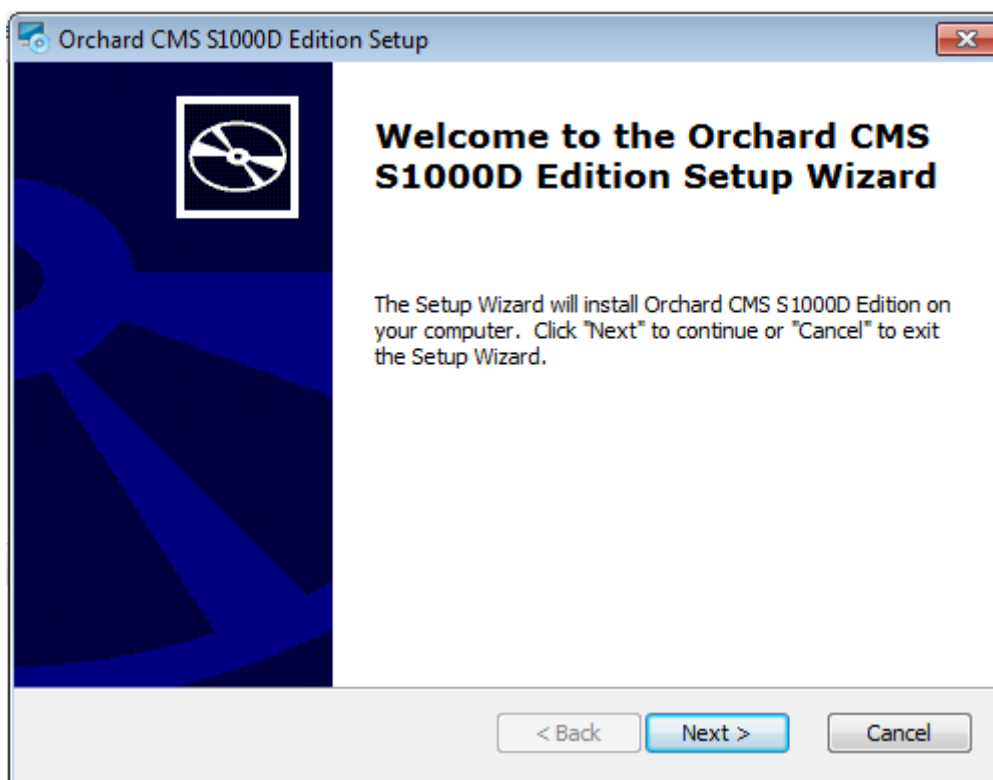
- .NET Framework 4.5.1

After installation, select *Restart Now*.

- Saxon-HE 9.5.1.1.

Applicable to:
All

LP-A-00-00-10-00A-750A-A



ICN-LP-A-000000-A-LIBRO-00007-E-001-01

Fig 2 Installer screen

- 3 After completing installation, fill fields and select option in the opened window ([Fig 3](#)). Click *Finish setup*.

Note 2

Selecting *Use an existing SQL Server, SQL Express Server* option requires preliminary configuring the SQL Server ([LP-A-00-00-10-00A-272A-A](#))



Get Started

Please answer a few questions to configure your site.

What is the name of your site?

Choose a user name:

Choose a password:

Confirm the password:


How would you like to store your data?

- Use built-in data storage (SQL Server Compact)
- Use an existing SQL Server, SQL Express database
- Use an existing MySql database

Choose an Orchard Recipe

Orchard Recipes allow you to setup your site with additional pre-configured options, features and settings out of the box

Libroplanta recipe



ICN-LP-A-000000-A-LIBRO-00009-E-001-01

Fig 3 Orchard Get Started Window

4 Enter admin login and password (Fig 4).



Please enter your username and password.

Account Information

Username

Password

Remember Me

Sign In

ICN-LP-A-000000-A-LIBRO-00010-E-001-01

Fig 4 Sign In Window

Requirements after job completion

Required conditions

Table 6 Required conditions

Action / Condition	Data module / Technical publication
None	



SQL Server

Configuration

Table of contents

	Page
Configuration.....	1
References.....	1
Preliminary requirements.....	1
Procedure.....	2
Requirements after job completion.....	4

List of tables

1	References.....	1
2	Required conditions.....	1
3	Support equipment.....	2
4	Consumables, materials and expendables.....	2
5	Spares.....	2
6	Required conditions.....	4

List of figures

1	SQL Server Configuration Manager.....	3
2	SQL Server Management Studio.....	3

References

Table 1 References

Data module / Technical publication	Title
None	

Preliminary requirements

Required conditions

Table 2 Required conditions

Action / Condition	Data module / Technical publication
None	



Support equipment

Table 3 Support equipment

Name	Identification/Reference	Quantity	Remark
None			

Consumables, materials and expendables

Table 4 Consumables, materials and expendables

Name	Identification/Reference	Quantity	Remark
None			

Spares

Table 5 Spares

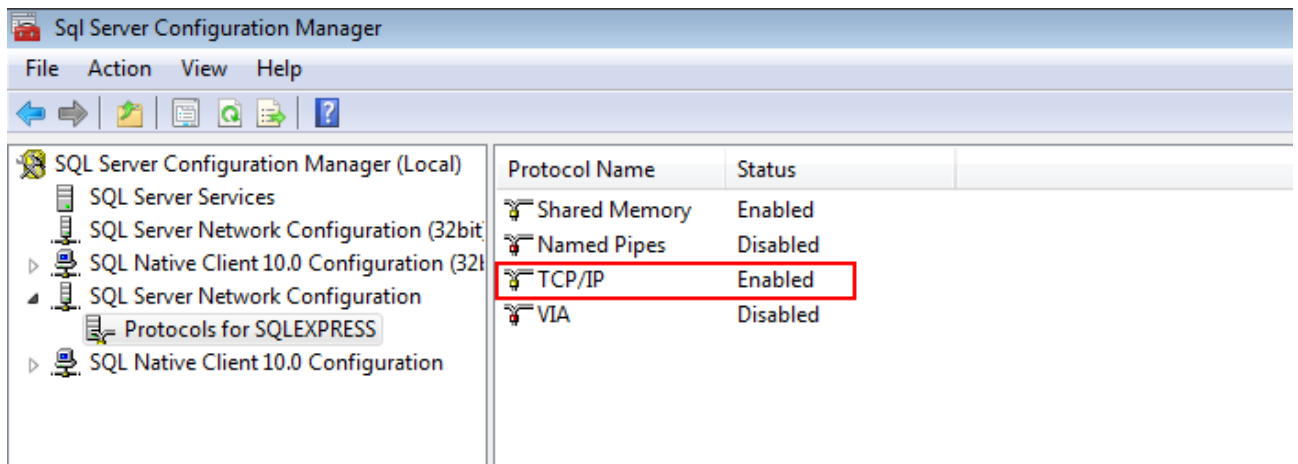
Name	Identification/Reference	Quantity	Remark
None			

Safety conditions

None

Procedure

- 1** **Configure SQL Server**
- 1.1 Run *SQL Server Configuration Manager*.
- 1.2 Enable TCP/IP Protocol ([Fig 1](#)).



ICN-LP-A-000000-A-LIBRO-00015-E-001-01

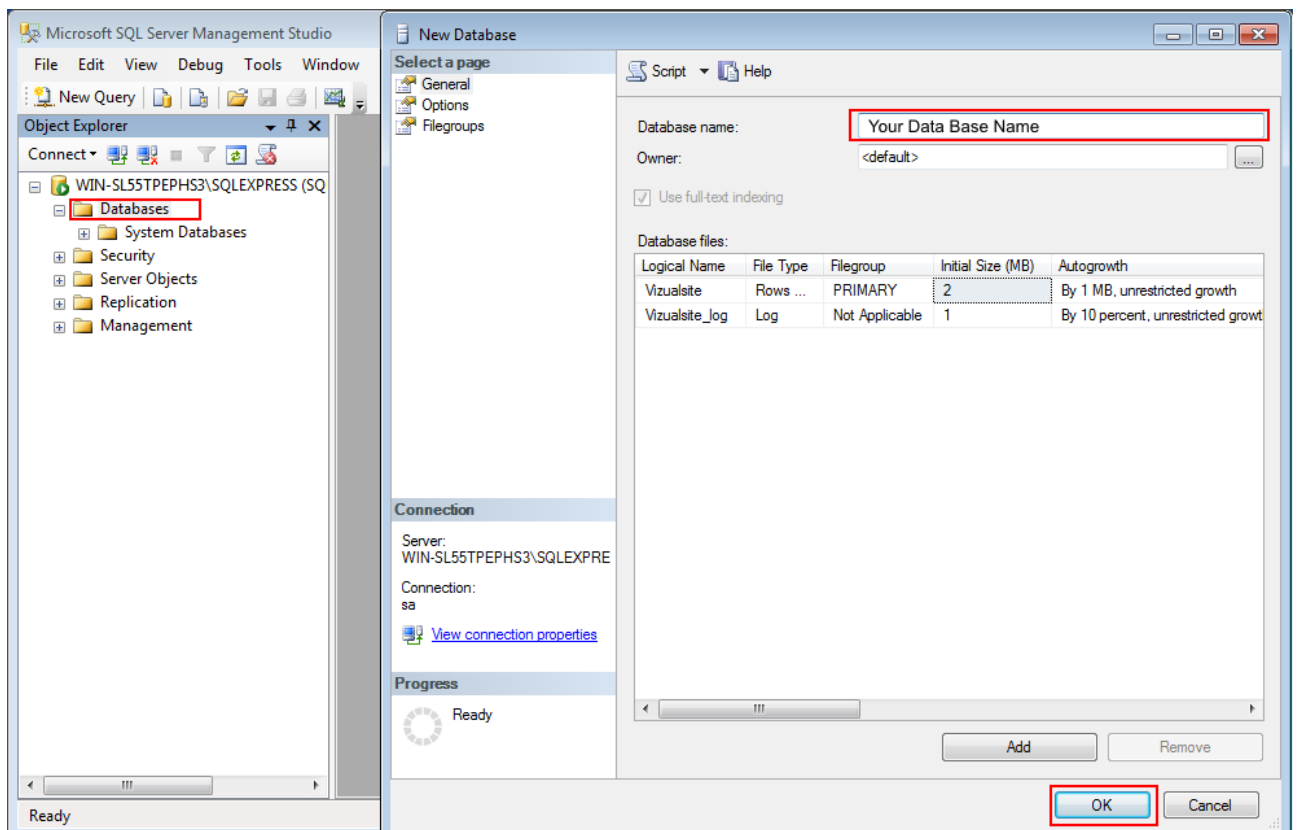
Fig 1 SQL Server Configuration Manager

1.3 Restart database instance.

2 Create Database

2.1 Run *SQL Server Management Studio*.

2.2 Right click on *Databases* item and select *New database* (Fig 2).



ICN-LP-A-000000-A-LIBRO-00016-E-001-01

Fig 2 SQL Server Management Studio

Applicable to:
All

LP-A-00-00-10-00A-272A-A



2.3 Enter Database name and click *OK*.

Requirements after job completion

Required conditions

Table 6 Required conditions

Action / Condition	Data module / Technical publication
None	
