



# LIBROPLANTA IETP Viewer

## Installation Guide

LPIETP-LIBRO-IG001-00

Issue No. 001, 2014-09-01



Copyright © 2014 LIBROPLANTA LLC  
S1000D® is a registered trademark of ASD

Publisher:



LIBROPLANTA LLC



Applicable to:  
All

End of data module  
UNCLASSIFIED

LPIETP-A-00-00-00-00A-001C-A

2014-09-01 Page 1





---

## Table of Contents

Document title	Data module code	Issue date Issue No.	No. of pages
<b>Front matter</b>			
LIBROPLANTA IETP Viewer — Title page	<a href="#">LPIETP-A-20-00-00-00A-001C-A</a>	2014-09-01 001	
<b>Installation Guide</b>			
LIBROPLANTA — Requirements	<a href="#">LP-A-00-00-00-00A-030A-A</a>	2014-09-01 001	1
LIBROPLANTA IETP Viewer — Installation Procedure	<a href="#">LPIETP-A-00-00-00-00A-750A-A</a>	2014-09-01 001	6
Orchard CMS S1000D Edition — Installation Procedure	<a href="#">LP-A-00-00-10-00A-750A-A</a>	2014-09-01 001	5
SQL Server — Configuration	<a href="#">LP-A-00-00-10-00A-272A-A</a>	2014-09-01 001	4

---





# LIBROPLANTA

## *Requirements*

### Table of contents

	Page
Requirements.....	1
References.....	1
Description.....	1
1 Minimum system requirements.....	1
2 Supported OS.....	1

### List of tables

1	References.....	1
---	-----------------	---

## *References*

*Table 1 References*

Data module / Technical publication	Title
None	

## *Description*

### 1 Minimum system requirements

- 1 GHz or faster 32-bit (x86) or 64-bit (x64) processor
- 1 GB RAM (32-bit) or 2 GB RAM (64-bit)
- 16 GB available hard disk space (32-bit) or 20 GB (64-bit)
- DirectX 9 graphics device with WDDM 1.0 or higher driver.

### 2 Supported OS

- Windows 7 Professional or higher (x86, x64)
- Windows 8 Professional or higher (x86, x64)
- Windows 8.1 Professional or higher (x86, x64)
- Windows Server 2008 (x86, x64)
- Windows Server 2008 R2 (x86, x64)
- Windows Server 2012 (x86, x64)
- Windows Server 2012 R2 (x86, x64)
- Linux Ubuntu





## LIBROPLANTA IETP Viewer

### *Installation Procedure*

#### Table of contents

	Page
Installation Procedure.....	1
References.....	1
Preliminary requirements.....	2
Procedure.....	2
Requirements after job completion.....	6

#### List of tables

1	References.....	1
2	Required conditions.....	2
3	Support equipment.....	2
4	Consumables, materials and expendables.....	2
5	Spares.....	2
6	Required conditions.....	6

#### List of figures

1	Orchard CMS admin panel.....	3
2	Installed modules.....	3
3	LIBROPLANTA.XMLDB feature.....	4
4	LIBROPLANTA.IETP feature.....	4
5	Main page.....	5
6	LIBROPLANTA category.....	6

### *References*

*Table 1 References*

Data module / Technical publication	Title
None	



## Preliminary requirements

### Required conditions

Table 2 Required conditions

Action / Condition	Data module / Technical publication
Orchard CMS S1000D Edition must be installed prior to installing LIBROPLANTA IETP Viewer	<a href="#">LP-A-00-00-10-00A-750A-A</a>

### Support equipment

Table 3 Support equipment

Name	Identification/Reference	Quantity	Remark
None			

### Consumables, materials and expendables

Table 4 Consumables, materials and expendables

Name	Identification/Reference	Quantity	Remark
None			

### Spares

Table 5 Spares

Name	Identification/Reference	Quantity	Remark
None			

### Safety conditions

#### Note 1

Orchard CMS S1000D Edition must be installed prior to installing LIBROPLANTA IETP Viewer

### Procedure

- 1 Enter web address of Orchard CMS S1000D Edition.

#### Note 2

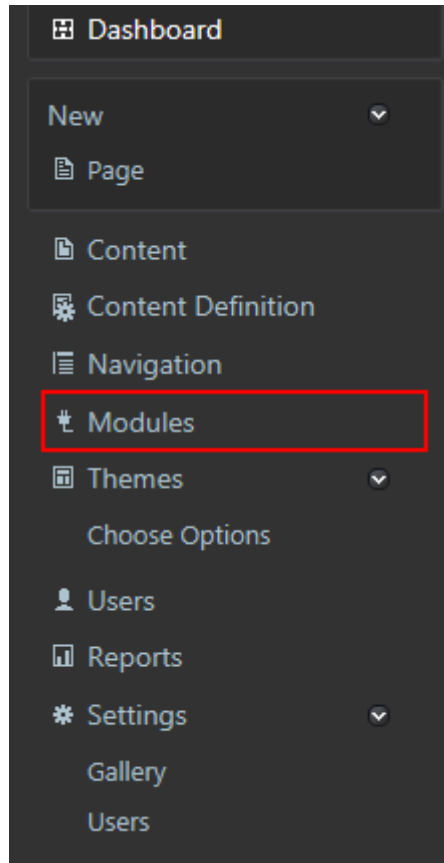
For example: <http://localhost:8080/admin>

- 2 Click on *Modules* Tab ([Fig 1](#))

Applicable to:  
All

LPIETP-A-00-00-00-00A-750A-A

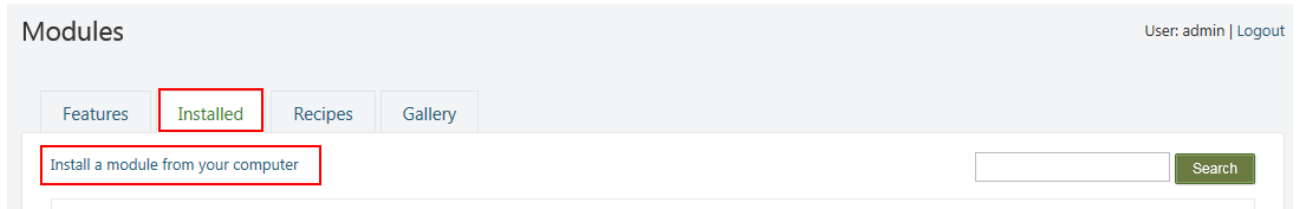




ICN-LP-A-000000-A-LIBRO-00001-E-001-01

Fig 1 Orchard CMS admin panel

- 3 Select *Installed* Tab (Fig 2) and click on *Install a module from your computer*.



ICN-LP-A-000000-A-LIBRO-00002-E-001-01

Fig 2 Installed modules

- 4 Install modules:
- 1 LIBROPLANTA.XMLDB module (Step 5)
  - 2 LIBROPLANTA.IETP module (Step 6).

## 5 LIBROPLANTA.XMLDB module installation

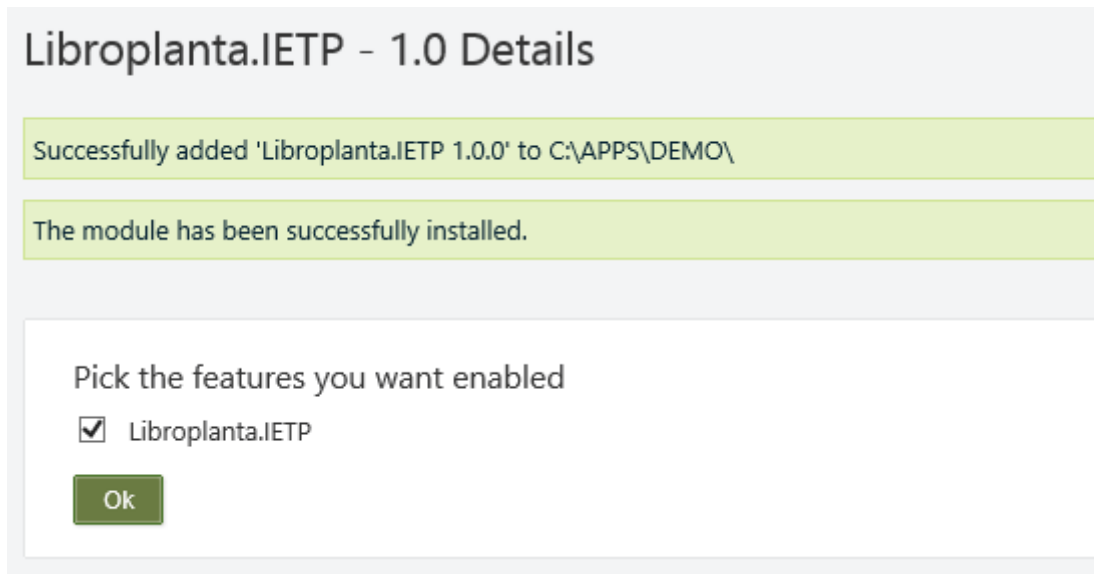
### Note 3

Prior to installation make sure that the module is not installed.

- 5.1 Click on *Browse* and select *LIBROPLANTA.XMLDB.X.X.X.nupkg* file.



5.2 Click *OK* (Fig 3).



ICN-LP-A-000000-A-LIBRO-00011-E-001-01

Fig 3 LIBROPLANTA.XMLDB feature

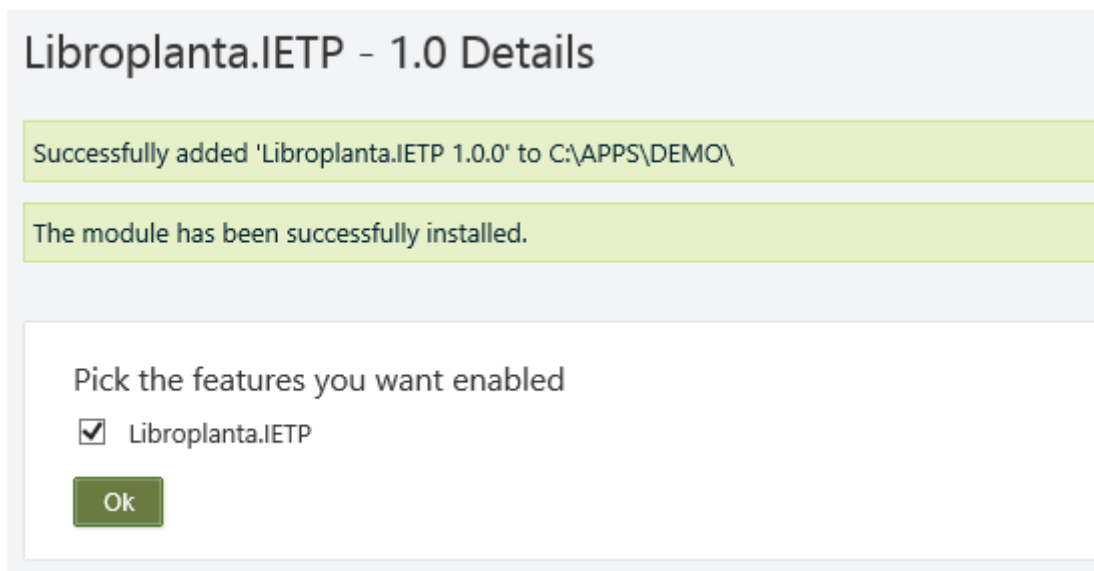
## 6 LIBROPLANTA.IETP module installation

### Note 4

Prior to installation make sure that the module is not installed.

6.1 Click on *Browse* and select *LIBROPLANTA.IETP.X.X.X.nupkg* file.

6.2 Click *OK* (Fig 4).



ICN-LP-A-000000-A-LIBRO-00011-E-001-01

Fig 4 LIBROPLANTA.IETP feature

7 Ensure that installed module are present (Fig 5, Fig 6).



LIBROPLANTA



Libroplanta CSDB

S1000D Common Source Data Base



S1000D IETP Center

Interactive Electronic Technical Publications

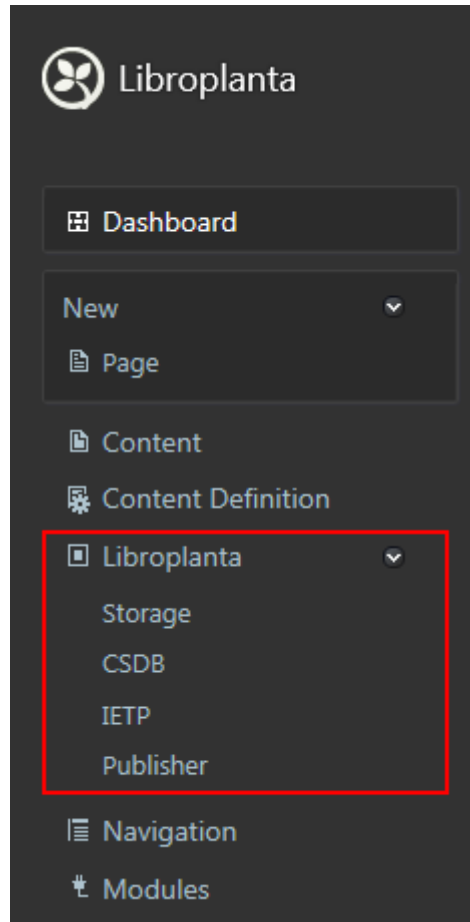


S1000D Publisher

S1000D Web Publishing System

ICN-LP-A-000000-A-LIBRO-00017-E-001-01

*Fig 5 Main page*



ICN-LP-A-000000-A-LIBRO-00018-E-001-01

Fig 6 LIBROPLANTA category

### Requirements after job completion

#### Required conditions

Table 6 Required conditions

Action / Condition	Data module / Technical publication
None	



# Orchard CMS S1000D Edition

## *Installation Procedure*

### Table of contents

	Page
Installation Procedure.....	1
References.....	1
Preliminary requirements.....	1
Procedure.....	2
Requirements after job completion.....	5

### List of tables

1	References.....	1
2	Required conditions.....	1
3	Support equipment.....	2
4	Consumables, materials and expendables.....	2
5	Spares.....	2
6	Required conditions.....	5

### List of figures

1	Setup file (EXE).....	2
2	Installer screen.....	3
3	Orchard Get Started Window.....	4
4	Sign In Window.....	5

## *References*

*Table 1 References*

Data module / Technical publication	Title
None	

## *Preliminary requirements*

### Required conditions

*Table 2 Required conditions*

Action / Condition	Data module / Technical publication
None	



## Support equipment

Table 3 Support equipment

Name	Identification/Reference	Quantity	Remark
None			

## Consumables, materials and expendables

Table 4 Consumables, materials and expendables

Name	Identification/Reference	Quantity	Remark
None			

## Spares

Table 5 Spares

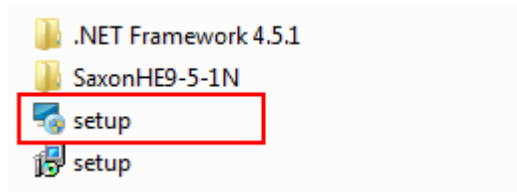
Name	Identification/Reference	Quantity	Remark
None			

## Safety conditions

None

### Procedure

- 1 Open folder with setup file and run *setup.exe* (Fig 1).



ICN-LP-A-000000-A-LIBRO-00008-E-001-01

Fig 1 Setup file (EXE)

- 2 Follow the Installer instructions (Fig 2).

#### Note 1

If necessary, the following components will be installed automatically:

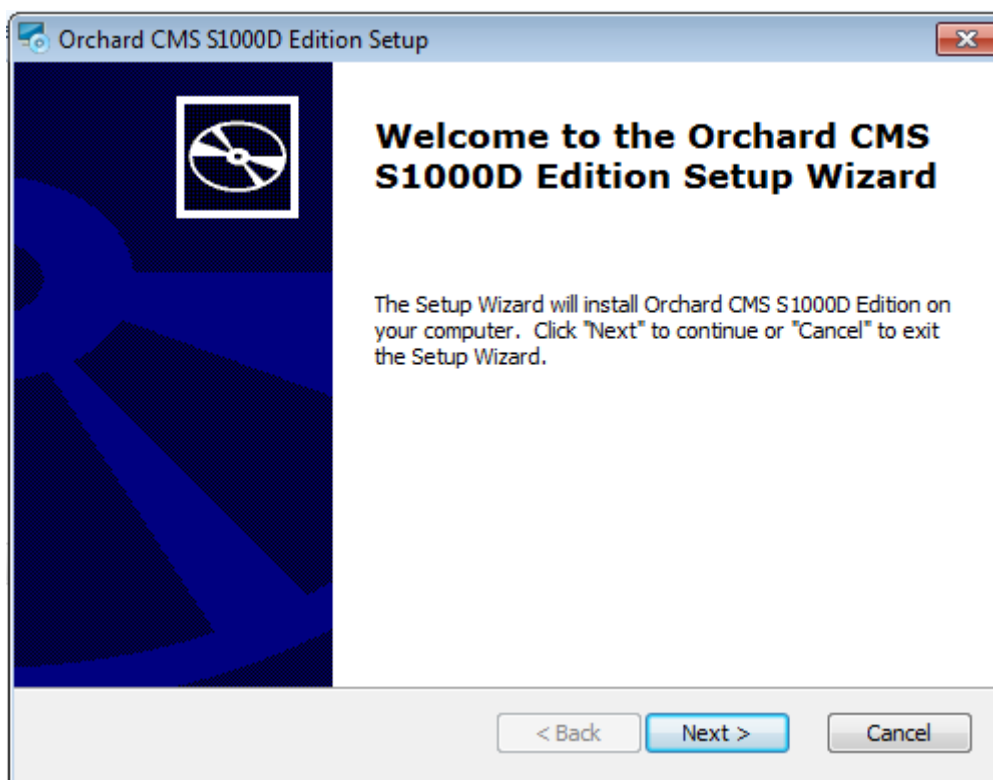
- .NET Framework 4.5.1

After installation, select *Restart Now*.

- Saxon-HE 9.5.1.1.

Applicable to:  
All

LP-A-00-00-10-00A-750A-A



ICN-LP-A-000000-A-LIBRO-00007-E-001-01

*Fig 2 Installer screen*

- 3 After completing installation, fill fields and select option in the opened window ([Fig 3](#)). Click *Finish setup*.

**Note 2**

Selecting *Use an existing SQL Server, SQL Express Server* option requires preliminary configuring the SQL Server ([LP-A-00-00-10-00A-272A-A](#))



## Get Started

Please answer a few questions to configure your site.

What is the name of your site?

Choose a user name:

Choose a password:

Confirm the password:


How would you like to store your data?

- Use built-in data storage (SQL Server Compact)
- Use an existing SQL Server, SQL Express database
- Use an existing MySql database

Choose an Orchard Recipe

Orchard Recipes allow you to setup your site with additional pre-configured options, features and settings out of the box

Libroplanta recipe



ICN-LP-A-000000-A-LIBRO-00009-E-001-01

Fig 3 Orchard Get Started Window

4 Enter admin login and password (Fig 4).





Please enter your username and password.

## Account Information

**Username**

**Password**

Remember Me

Sign In

ICN-LP-A-000000-A-LIBRO-00010-E-001-01

*Fig 4 Sign In Window*

## *Requirements after job completion*

### Required conditions

*Table 6 Required conditions*

Action / Condition	Data module / Technical publication
None	





# SQL Server

## Configuration

### Table of contents

	Page
Configuration.....	1
References.....	1
Preliminary requirements.....	1
Procedure.....	2
Requirements after job completion.....	4

### List of tables

1	References.....	1
2	Required conditions.....	1
3	Support equipment.....	2
4	Consumables, materials and expendables.....	2
5	Spares.....	2
6	Required conditions.....	4

### List of figures

1	SQL Server Configuration Manager.....	3
2	SQL Server Management Studio.....	3

## References

Table 1 References

Data module / Technical publication	Title
None	

## Preliminary requirements

### Required conditions

Table 2 Required conditions

Action / Condition	Data module / Technical publication
None	



---

## Support equipment

*Table 3 Support equipment*

Name	Identification/Reference	Quantity	Remark
None			

## Consumables, materials and expendables

*Table 4 Consumables, materials and expendables*

Name	Identification/Reference	Quantity	Remark
None			

## Spares

*Table 5 Spares*

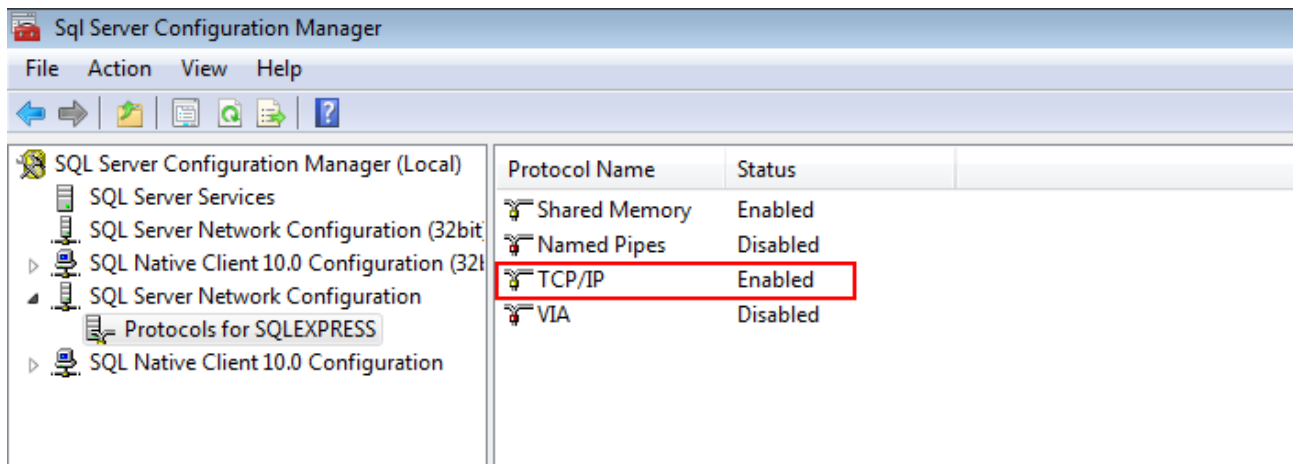
Name	Identification/Reference	Quantity	Remark
None			

## Safety conditions

None

### *Procedure*

- 1**      **Configure SQL Server**
- 1.1     Run *SQL Server Configuration Manager*.
- 1.2     Enable TCP/IP Protocol ([Fig 1](#)).



ICN-LP-A-000000-A-LIBRO-00015-E-001-01

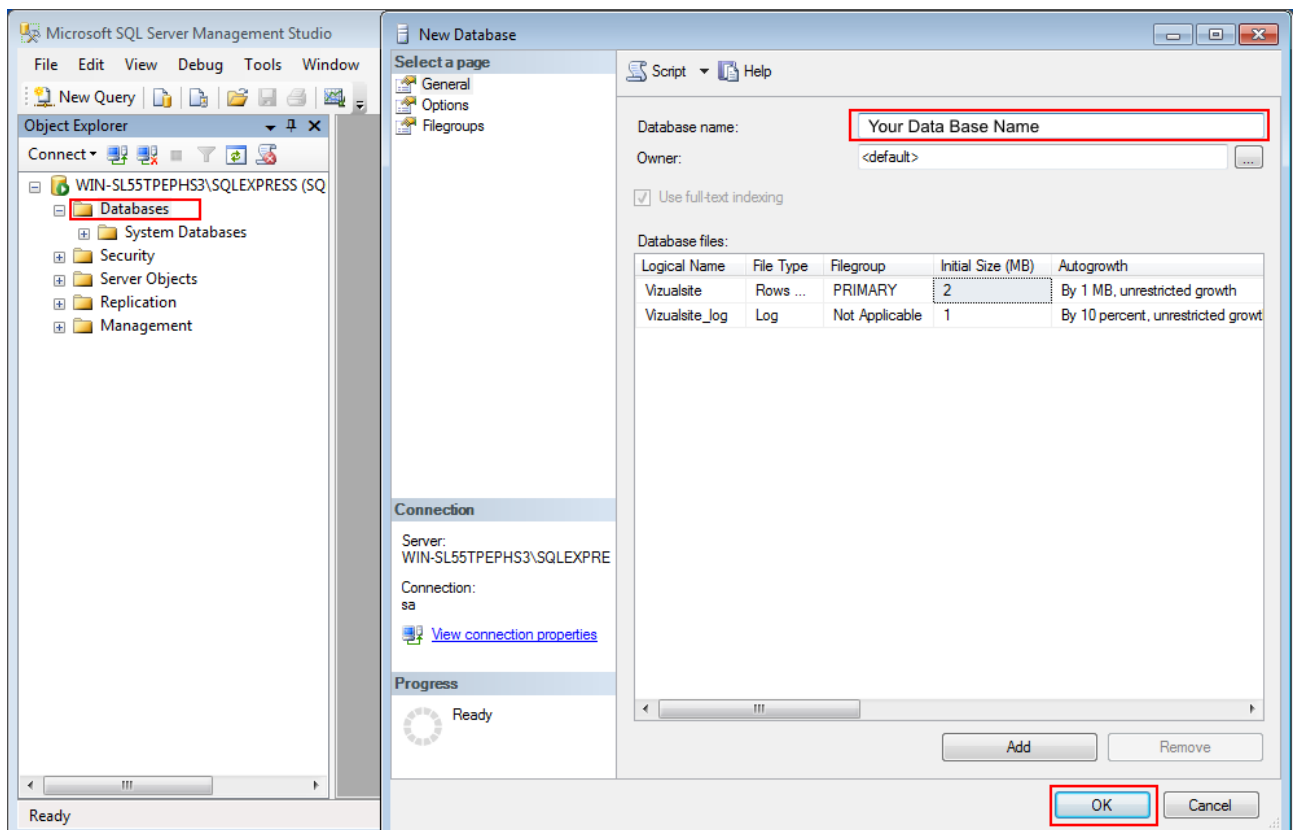
Fig 1 SQL Server Configuration Manager

1.3 Restart database instance.

## 2 Create Database

2.1 Run *SQL Server Management Studio*.

2.2 Right click on *Databases* item and select *New database* (Fig 2).



ICN-LP-A-000000-A-LIBRO-00016-E-001-01

Fig 2 SQL Server Management Studio

Applicable to:  
All

LP-A-00-00-10-00A-272A-A



---

2.3 Enter Database name and click *OK*.

### *Requirements after job completion*

#### Required conditions

*Table 6 Required conditions*

Action / Condition	Data module / Technical publication
None	